

Distributed By –

**UMC Ingredients**  
160 Chubb Ave., Ste. 206  
Lyndhurst, NJ 07071  
(201) 896-8666

COSMETIC USE



# Twinone™ SS-1000

Amphiphilic Powder

-----

Soft Focus Effect

-----

Luxurious Skin Feel

-----

Application Feel Test

-----

Natural Looking & Long-Wear Makeup

-----

Specifications & Product Applications

# Twinone™

*SS-1000*

---

The challenge of maintaining that “just applied makeup” look is two-fold: counteracting the negative effect of both secreted sebum oil and perspiration. Sebum oil tends to breakdown finely applied makeup resulting in unwanted shiny skin. Perspiration, primarily water and salt, can leave the face looking flat and unnatural. While these two facial secretions are seemingly incompatible with each other, Twinone™ SS-1000 effectively and simultaneously controls both. Sebum oil and perspiration are absorbed, controlled, and maintained, while leaving the skin with a soft & silky feel. Natural looking, long wear makeup is now possible with Twinone™ SS-1000.



High  
QUALITY

Various  
PRODUCTS

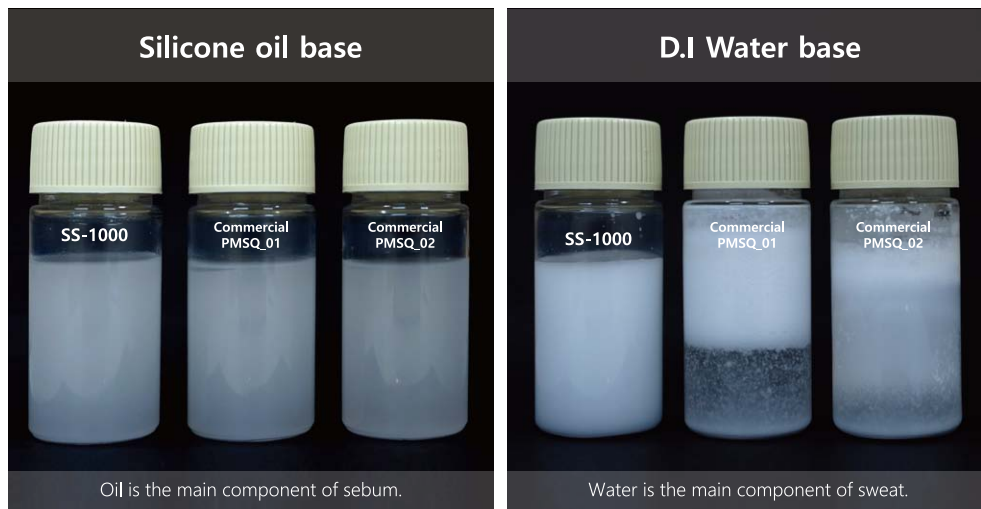
Timely  
DELIVERY

Rational  
PRICE

Rapid  
FEED-BACK

## ■ Amphiphilic Powder

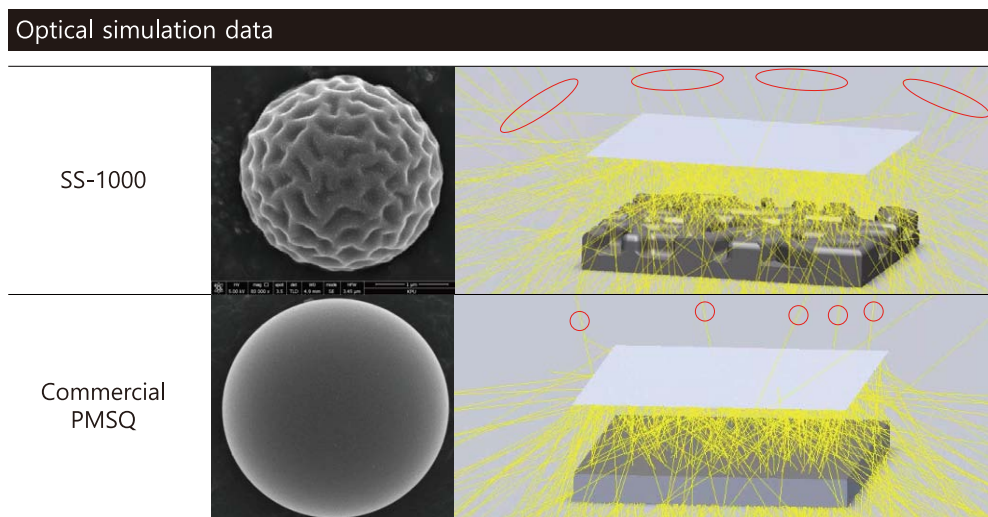
Exhibits hydrophilic and lipophilic properties



**Compatible in oil and water.**

## ■ Soft Focus Effect

The unique surface topography scatters reflected light, resulting for a soft focus effect.

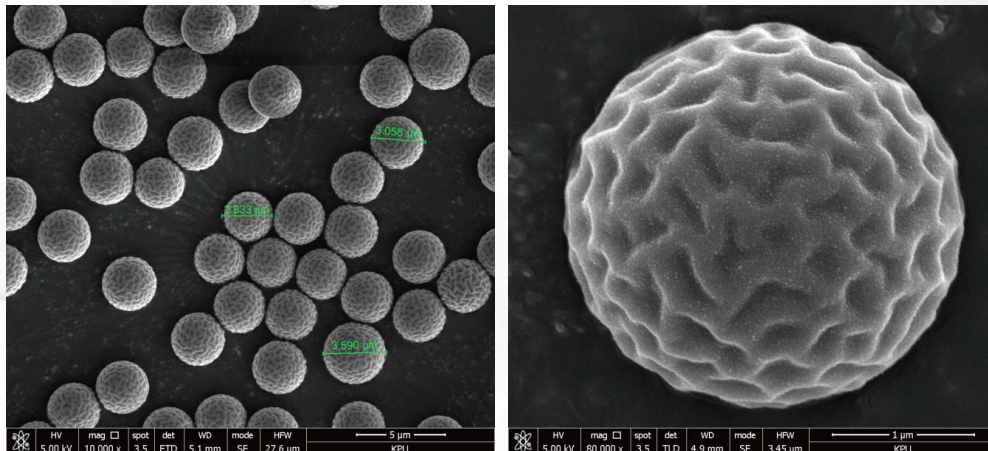


As you can see in the figure above,  
Twinone™ SS-1000 shows improved light scattering versus conventional PMSQ powders.

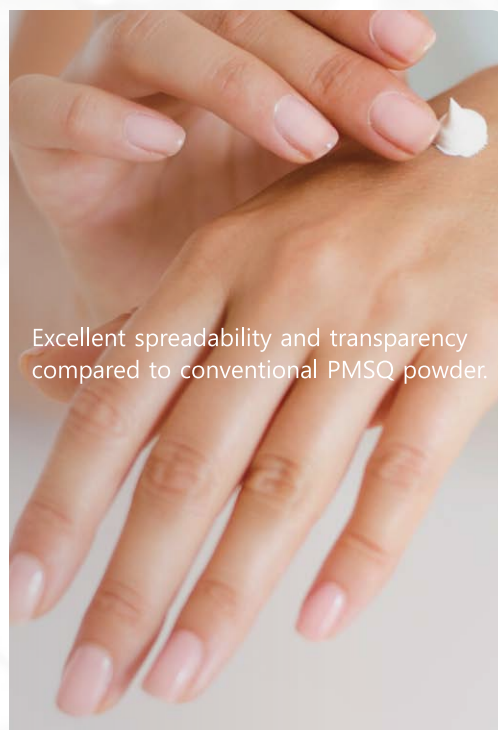
## ■ Luxurious Skin Feel

The unique surface topography improves the application and “feel” of finished makeup products.

### SEM image



## ■ Application Feel Test



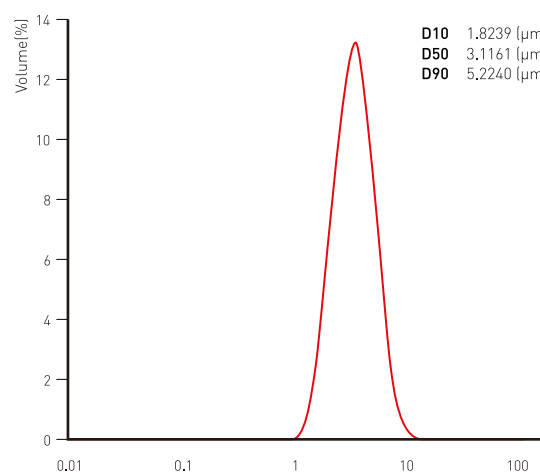
Double control effect [ Water + Oil Absorption ]

## ■ Natural Looking & Long-Wear Makeup

Water + Oil Absorption	
<b>Improved Effect</b>	Twinone™ SS-1000 controls perspiration and sebum oil simultaneously, resulting in healthy, natural looking skin.

## ■ Specifications & Product Applications

INCI Name : Polymethylsilsesquioxane CAS NO. 68554-70-1		
ITEMS	SPEC.	TEST METHOD
Appearance	white powder	Eye inspection
Particle size (D50)	2 ~ 5 (μm)	Particle size analyzer
LOD	3.0 % Max.	130 °C, 2hr
Oil absorption	40~60g/100g	ASTM D 1483-95
pH	6 ~ 9	10 % in distilled water
Heavy metals	Pb	5 ppm max.
	As	2 ppm max.
	Hg	1 ppm max.
	Sb	1 ppm max.
	Cd	1 ppm max.
		EPA 3052



### Applications

\* **Concept** : Amphiphilic effect , Luxurious Skin Feel, Soft focus appearance, Long wear makeup, Healthy natural looking skin.

\* **Cosmetic** : Skin care, make-up, sun care.

“World Leading Pigments Material Provider ”

---



Creation of Quality Value

## 씨큐브 주식회사

충북 진천군 진천읍 성중로 144번지  
T. 043 531 2500  
F. 043 536 0314  
<http://www.cqv.co.kr>

144, Seongjung-ro, Jincheon-Eup, Jincheon-Gun,  
ChungCheong Buk-Do, Korea  
T. 82 43 531 2500  
F. 82 43 536 0314  
<http://www.cqv.co.kr>