

PRODUCT PORTFOLIO

2025 | Ver.15
www.dkfinechem.com

Imported & Distributed by

UMC

UNITED MINERAL & CHEMICAL CORP

160 Chubb Ave, Suite 206, Lyndhurst, NJ 07071
Tel (201) 507-3300 :: Fax (201) 507-1506
Email: inquiry@umccorp.com

Dk FineChemTM

Thickener
Superplasticizer
SUPERFLOW ®
Specialty Additives
ONEPACK KIT ®
Pharmaceutical

**The inventor
of better life!**

CONTENTS



Plasters & Renders (Cement/Gypsum)

MEICELL® provides excellent workability and water retention



EIFS/ETICS

MEICELL® provides excellent workability and long working time.



Skim coat

MEICELL® smooths wall surface ensures easy workability, long port life, excellent water retention and more



Ceramic & Cement extrusion

MEICELL® provides water retention and lubricity during processing



Masonry mortar

MEICELL® provides excellent workability and water retention



Tile Adhesives

MEICELL® provides excellent thickening efficiency, long open time and adhesion power.



Joint Compound

MEICELL® provides workability and tape adhesion, crack resistance



Self-leveling

MEICELL® provides excellent workability and water retention

01. Thickener

MEICELL® Construction Application

MEICELL® Paint Application

- Waterborne Paint
- Paint Remover

MEICELL® Personal Care Application

- Cosmetics
- Personal Care
- Detergent

02. Superplasticizer

MEGAFLOW®

SUPERFLOW®

03. Specialty Additives

GYPWER®

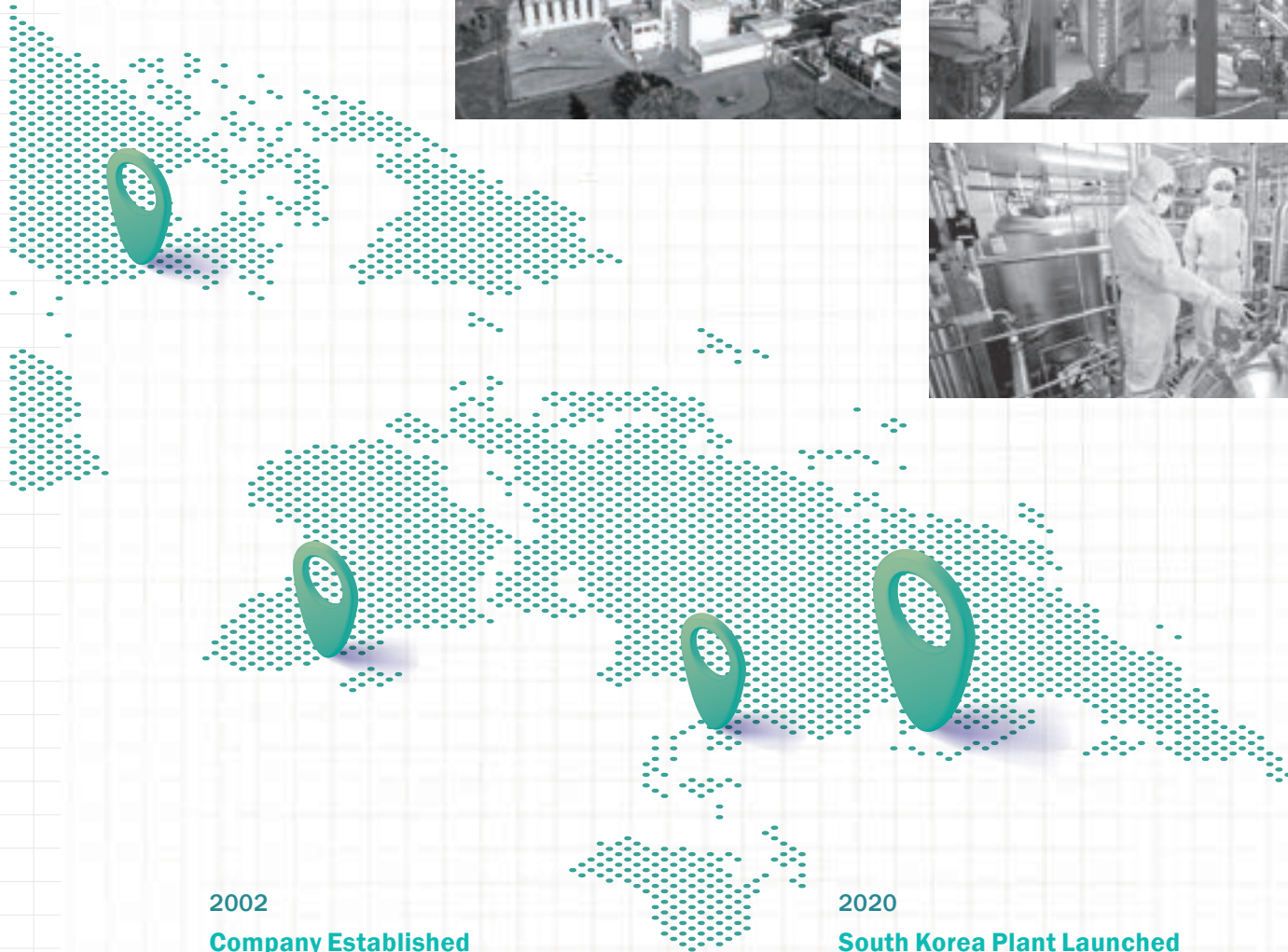
MONOCELL®

REDICELL®

04. ONEPACK KIT

05. Pharmaceutical

Company History



2002

Company Established

DK FINECHEMICAL started Cellulose Ether business.

2012

Export Division Established

DK FINECHEMICAL launched MEICELL®, DURACOAT®, REDICELL®

2013

ISO9001 / ISO 14001 / EU REACH

ISO9001 / ISO 14001 / ISO45001
REACH register in EU

2019

South Africa Center Established

Opened Johannesburg warehouse center.

2020

South Korea Plant Launched

Launched South Korea R&D center and Gimpo Plant

2022

USA Cellulose R&D Center

Founded USA Washington D.C. R&D Center

2024

South Korea Hwasung Plant R&D Center

Launched South Korea R&D center and Gimpo Plant

DFC(DK FINECHEMICAL) Cellulose Ether

South Korea Professional Cellulose Ether Manufacturer

Welcome to DFC (DK FINECHEMICAL)! Our cellulose division is pivotal to the future success of DK FINECHEMICAL. With over two decades of expertise in both sales and manufacturing of our products, we are confident in our ability to deliver unparalleled quality to our customers. MEICELL® stands as a non-ionic cellulose ether, meticulously modified for versatile applications across sectors such as construction, pharmaceuticals, detergents, daily care products and so on. Additionally, we specialize in creating customized cellulose ether products tailored to meet the specific requirements of our clients. Employing a unique technology and methodology, we ensure that we can address all customer needs effectively. We take pride in assuring our clients that our comprehensive product range is designed to consistently enhance their business efficiency. At DFC, our commitment is to furnish top-tier cellulose products, contributing to an overall elevation of industry standards. We are dedicated to delivering a superior quality that sets the benchmark for excellence.

DK FINECHEMICAL
The inventor of better life!



Product Category

Being more than 20 years in the cellulose industry, DKFINECHEMICAL focuses on the water-soluble polymer business



Thickener MEICELL®

Sodium Carboxymethy | Cellulose

Hydroxypropy | Methy | Cellulose

Hydroxymethy | Ethy | Cellulose

Hydroxyethy | Cellulose

Hydroxypropy | Starch Ether

EVA Polymer Powder



Superplasticizer

High-performance
Water Reducing Agent

Antifouling Agent



REDICELL®

EVA Polymer Powder



Specialty additives

Industrial retarder

Industrial biocides

Personal care coating

Binder for lithium battery

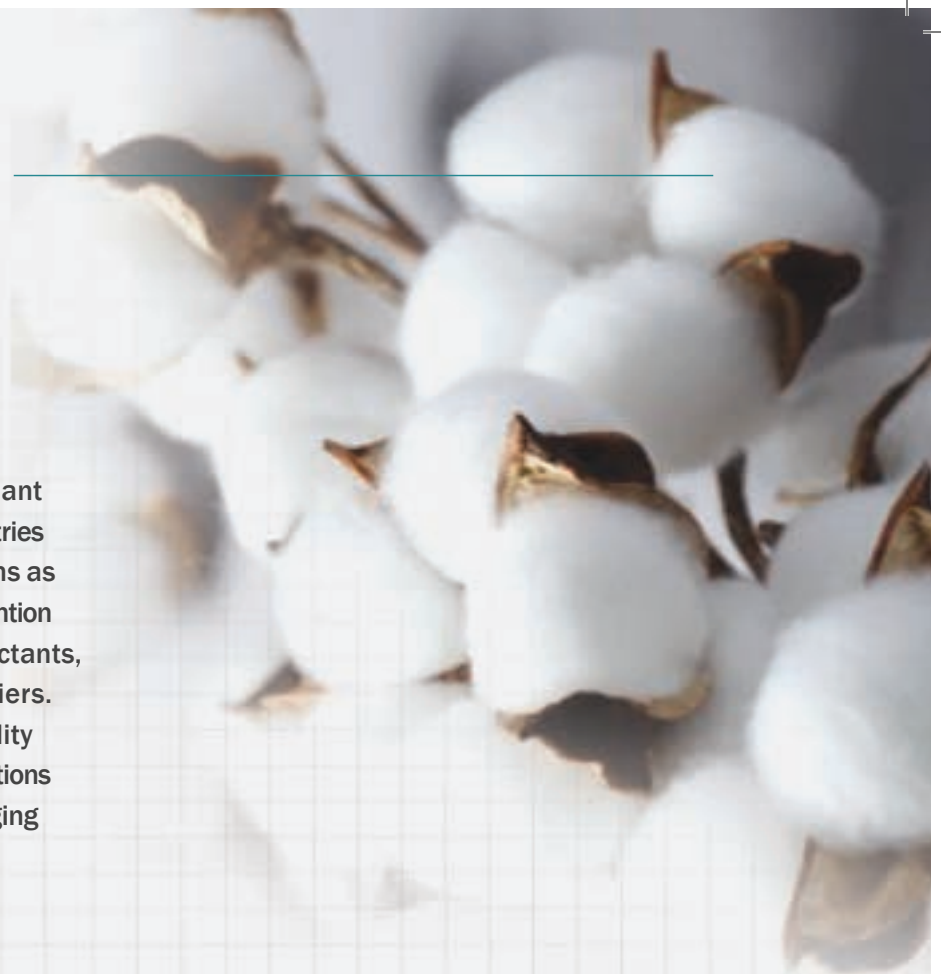
One pack kit solution

Thickener Construction

MEICELL®

Construction Application

Water-soluble polymers derived from abundant cellulose which has been serving various industries for over 60 years. In construction, it functions as thickeners, binders, film formers, and water-retention agents. It also act as suspension aids, surfactants, lubricants, protective colloids, and emulsifiers. Unique thermal gelling property and the ability to form high-viscosity solutions at low concentrations make MEICELL® valuable in applications ranging from construction and ceramics to foods.



Thickener

Plasters & Renders

Thickener

MEICELL® Construction Application

Plaster & Render (Cement / Gypsum)

Type	Viscosity (mPa.s, 2%)	Economic	Quick viscosity rise	Workability	Sag resistance
FMD-3840	6,600-9,000			●	
GH-15ZS	13,500-16,500	●		●	
MPK-20ZS	18,000-22,000			●	
FMD-1270	50,000-60,000		●		
FMD-2335	20,000-30,000	●		●	
MEA-40ZS	36,000-44,000				
FMD-3830	27,000-32,000	●		●	●
FMD-3820	31,000-35,000	●		●	●
GMD-45ZS	45,000-55,000	●			
FMD-1002	45,000-55,000	●			
FMD-34541	53,000-63,000	●		●	●
MEA-60Z	55,000-65,000			●	●
MPK-70Z	63,000-77,000		●		●
MPK-80Z	72,000-88,000			●	●

Tile Adhesive

CTA classification

C0 Minimum standard performance	T Slip resistance	S1 Deformable
C1 Standard performance	E Extended open time	S2 Highly deformable
C2 Improved performance	F Fast setting	

Tile Adhesive - C2TE

Type	Viscosity (mPa.S, 2%)
FMD-2313	3,000-6,000
FMD-2318	7,000-10,000
FMD-2311	12,000-18,000
FMD-2325	12,000-18,000
FMD-2312	15,000-20,000
FMD-2335	19,000-25,000
FMD-23351	20,000-30,000

Product	Type	Viscosity (mPa.S, 2%)
Tile Adhesive - C2T	FMD-2349	25,000-35,000
Tile Adhesive - C1T, C0	FMD-1269	50,000-60,000
Tile Adhesive - C1TE	FMD-23571	40,000-50,000
Tile Adhesive - C0	FMD-2377	65,000-75,000
Tile Adhesive - C1T	FMD-1270	50,000-60,000

Thickener

Skim Coat

MEICELL[®] Construction Application

Skim Coat						
Type	Viscosity (mPa.s, 2%)	Economic	Workability	Extended port tile	Less lump	Smooth surface
MPK-15ZVS	13,500-16,500		●	●	●	●
FMD-1246	27,000-33,000	●	●	●●	●	●
MEA-40ZS	36,000-44,000		●		●	
MPK-45ZS	40,000-50,000	●		●		
FMD-1263	45,000-55,000	●	●			●
MPK-80ZVS	72,000-88,000			●●	●	●

EIFS / ETICS

EIFS / ETICS						
Type	Viscosity (mPa.s, 2%)	Superior overall performance	Open time	Workability	Slip resistance	Less stickiness
FMD-2323	14,000-22,000	●		●		
FMD-2723	15,000-25,000	●		●		
FMD-2346	25,000-35,000	●				
FMD-2356	40,000-50,000	●	●			
FMD-1002	45,000-55,000	●				
FMD-2376	60,000-70,000	●	●		●	●

Joint Compound

Joint Compound						
Type	Viscosity (mPa.s, 2%)	Cracking	Water retention	Surface texture	In-Bucket appearance	In-Bucket stability
FMD-3546	30,000-36,000	●	●	●	●	●
FMD-3550	15,000-25,000	●	●	●	●	●
FMD-3553	25,000-35,000	●	●●	●●	●●	●●

Ceramic/ Cement Extrusion

Ceramic Extrusion						
Type	Viscosity (mPa.s, 2%)	Extrusion speed	Body Hardness	Surface state	Temperature stability	Extrusion pressure
MPD-40Y	3,600-4,400		●	●		●
MPD-15Z	13,500-16,500		●	●		●
MPD-30Z	27,000-33,000	●	●	●		

Cement Extrusion						
Type	Viscosity (mPa.s, 2%)	Extrusion speed	Body Hardness	Surface state	Temperature stability	Extrusion pressure
MPK-40YS	3,600-4,400	●				
MPK-40Z	36,000-44,000		●			
FMD-1003	63,000-77,000		●●	●●	●	●
FMD-1004	63,000-77,000		●●	●●	●	●
MPK-80ZS	72,000-88,000					
FMD-1005	99,000-121,000		●●	●●	●●	●●

Thickener Paint

MEICELL®

Paint Application

Waterborne Paint

Paint Remover



Thickener

Waterborne
Paint

Thickener MEICELL[®] Paint Application

Low ← STABILITY → High

Waterborne Paint

	Economic Type	General Type	Premium Type	Viscosity (Cps)	Sol%	Spindle	Shear RPM
	-	-	H-5600LL	75-150	5	2	60
	FMD-5693LB FMD-5793LB	FMD-5893LB	H-5693LB	100-180	2	2	60
	FMD-5693B FMD-5793B	FMD-5893B	H-5693B	250-400	2	2	60
	FMD-5683B FMD-5783B	FMD-5883B	H-5683B	1,500-2,500	2	3	30
	FMD-5673B FMD-5773B	FMD-5873B	H-5673B	4,500-6,500	2	4	60
	FMD-5653B FMD-5753B	FMD-5853B	H-5653B	1,000-1,500	1	3	30
	FMD-5643B FMD-5743B	FMD-5843B	H-5643B	1,500-2,500	1	3	30
	FMD-5633B FMD-5733B	FMD-5833B	H-5633B	2,600-3,300	1	3	30
	FMD-5623B FMD-5723B	FMD-5823B	H-5623B	3,400-5,000	1	4	30
	FMD-5613B FMD-5713B	FMD-5813B	H-5613B	5,000-6,500	1	4	30
	FMD-5603B FMD-5703B	FMD-5803B	-	6,600-8,000	1	4	30
	FMD-5603HB FMD-5790HB	FMD-5803HB	-	8,100-13,000	1	4	30

Low ↑
 VISCOSITY (Cps)
 ↓ Ultra High

Opaque ← COLOR → Transparent

Paint
Remover

Paint Remover

Type	Solution (1~2%)	Viscosity Range (Cps)
FMD-5028	2%	18,000~23,000

CMC Paint

CMC Paint Application

Type	Solution (1%)	Viscosity Range (Cps)
CMP-8-2500	1%	2,000~3,000
CMP-8-4000	1%	3,000~5,000
CMP-8-6000	1%	5,000~7,000
CMP-8-7500	1%	7,000~8,000
CMP-8-9000	1%	8,000~10,000

Thickener Personal Care

MEICELL®

Personal Care Application

Cosmetics

Personal Care

Detergent

Thickener

Cosmetics

Cosmetics				
Premium Type	Viscosity (Cps) 1%	Viscosity (Cps) 2%	Spindle	RPM
H-5643	1,500~2,500	-	3	30
H-5633	2,600 ~ 3,300	-	3	30
H-5623	3,400 ~ 5,000	-	4	30
H-5613	5,000 ~ 6,400	-	4	30

Personal Care Application

Personal Care				
Premium Type	Viscosity (Cps) 1%	Viscosity (Cps) 2%	Spindle	RPM
H-5693L	-	25 ~ 105	2	60
H-5693	-	150 ~ 400	2	60
H-5683	-	1,500 ~ 2,500	3	30
H-5673	-	4,500 ~ 6,500	4	60
H-5653	800 ~ 1,500	-	3	30
H-5643	1,500 ~ 2,500	-	3	30
H-5633	2,600 ~ 3,300	-	3	30
H-5623	3,400 ~ 5,000	-	4	30
H-5613	5,000 ~ 6,400	-	4	30

Detergent

Detergent				
Type	Viscosity (mPa.s, 2%)	Viscosity	Biostable	Charging speed
FMD-4923D	45,000~55,000	●		●
FMD-4923D	65,000~75,000	●●		
FMD-4923D	75,000~120,000	●●		
FMD-4923D	45,000~55,000	●	●	●
FMD-4923D	65,000~75,000	●●	●	

Superplasticizer



SUPERFLOW®

High-performance water reducing agent (SNF)

A powerful superplasticizer for concrete. Formulated from naphthalene, sulfuric acid, formaldehyde, and a liquid base, it undergoes sulfonation, hydrolysis, condensation, and neutralization reactions before being dried into a powder. Ideal for high-strength, steam-cured, fluid, impermeable, waterproof, and plasticized concrete. It is also perfect for use with steel bars and prestressed reinforced concrete. SUPERFLOW® elevates concrete performance.



MEGAFLOW®

High-performance water reducing agent (Polycarboxylate Ester)



Superplasticizer

High-performance water reducing agent
Antifouling Agent

GYPOWER®

Gypsum Retarder

A polycarboxylate ester based superplasticizer. It enhances concrete with improved workability, reduced water content, increased strength, and minimized bleeding or material separation.

A high-performance set retarder for gypsum binding materials. With its low dosage, it effectively delays setting time, allowing flexibility in manufacturing. Compatible with various binders and additives like Meicell® cellulose, it extends workability time of plasters and calcium sulfate-based mortars, reducing application costs. Gypower is eco-friendly, free of formaldehyde, and unlike other fruit acids, it maintains final strength of products.

Superplasticizer

MEGAFLOW®

Superplasticizer

MEGAFLOW®

MEGAFLOW®					
Type	Appearance	Solid Content	Ph	Density (kg/m ³)	Moisture content
DKSPS-03L	Colorless to light yellow viscous liquid	Customize	6.0±1.0	1.10±0.02	≥ 15%
DKSPS-09L	Colorless to light yellow viscous liquid	Customize	6.0±1.0	1.08±0.02	≥ 25%
DKSPS-10L	Colorless to light yellow viscous liquid	Customize	6.0±1.0	1.10±0.02	≥ 15%
DKSPS-18	White or light yellow flake	97.0 ± 1.0	6.0±1.0	450±50	-
DKSPS-21	White or light yellow flake	97.0 ± 1.0	6.0±1.0	450±50	-
DKSPS-28	White or light yellow flake	97.0 ± 1.0	6.0±1.0	450±50	-

SUPERFLOW®

SUPERFLOW®

SUPERFLOW®						
Type	pH	Solid Content (%) ≥	Na2SO4 Content (%) ≤	Chlorine Content (%) ≤	Net Starch Fluidity (mm) ≥	Max Water Reducing Rate (%)
SNF-5	7~9	92%	5%	0.3	250	26
SNF-18	7~9	92%	18%	0.5	230	23

GYPOWER®

Specialty Additives

GYPOWER®

GYPOWER®						
Type	Appearance	Density	Total Chloride Ion Content % w/w	Sodium Oxide AS % Na	pH Value	Dosage recommend (by Total mix weight)
30P	Bright, light brown powder	approx. 380 g/L	Max 0.1%	Max 2.0%	7-9 at + 23 (30% solution)	0.01 -0.1%
30L	Liquid	1.14~1.16 g/cm ³	29.0 % ±1.0 % (solid content)	Max 2.0%	7.0~9.0 (at +23)	0.003 -0.03 %

Specialty Additives



MONOCELL®

High-performance
Antibacterial Agent (Biocide)

MONOCELL® features a well-balanced particle size distribution for homogeneous mixing of construction materials. This ensures protection against mold and yeasts during the drying time of plasters and mortars. The use of MONOCELL® can also extend the lifetime of already-dried construction materials, providing enhanced protection against bacteria.

Specialty Additives MONOCELL®

MONOCELL®							
Type	Appearance	M.P (melting point)	Particle size	Moisture Content %	Specialty	Application	Application
T-30	Off white powder	Min 140	325mesh, 0.2%	≤0.3	Strong Antibacterial	0.01 -0.1%	Gypsum powders, Cement grout, Mortar, Dry glues
O-30	Off white powder	56~58	325mesh, 0.2%	≤0.2	Eco Grade Antibacterial	0.003 -0.03%	

Polymer powder that improves adhesive strength, cohesion and flexibility, making it suitable for a variety of bonding applications.

Specialty Additives REDICELL®



REDICELL®

RDP

REDICELL®		
Type	Flexibility	Recommended Applications
6010N	Hard	Tile adhesives, Tile grouts, Render and plaster, Wall and joint fillers
6044N	Very flexible	ETICS, Waterproofing membranes, Concrete repair, Wall and joint fillers
6028E	Semi-flexible	Tile adhesives
9055E	Highly flexible	Waterproofing membranes, ETICS, Concrete repair
8220E	Semi-flexible	Tile adhesives, Tile grouts, Renders and plasters
5042H	Very flexible	ETICS, Waterproofing membranes, Renders and plasters
9034H	Flexible	Tile grouts, Renders and plasters, Waterproofing membranes, ETICS
6111L	Hard	-



DURACOAT®

High-performance Pharmaceutical Coating Agent

High-performance Personal Care Products Thickener & Binder


Thickener Pharmaceutical

DURACOAT®

Pharmaceutical

DURACOAT® PHARMACEUTICAL APPLICATION

Hypromellose Brand name

Series	Substitution	Viscosity	Fine Granularity Premium
E	USP Substitution 2910 Type	2.4 mpa.s	
F	USP Substitution 2906 Type	*Y(x100)	
K	USP Substitution 2208 Type	*Z(x1000)	
		220,000 mpa.s	

DURACOAT®

DURACOAT® E-series

Pharmaceutical

DURACOAT® E-series

Hypromellose

Type	Solution (2%)	Viscosity Range (Cps)
E-3	2%	2.4~3.6
E-4	2%	3.2~4.8
E-4.5	2%	3.6~5.4
E-5	2%	4~6
E-6	2%	4.8~7.2
E-15	2%	12~18
E-50	2%	40~60
E-40Y	2%	3,000~5,600
EW-4	2%	3.2~4.8
EW-5	2%	4~6
EW-6	2%	4.8~7.2

DURACOAT® F-series

DURACOAT® F-series

Hypromellose

Type	Solution (2%)	Viscosity Range (Cps)
F-3	2%	2.4~3.6
F-5	2%	4~7
F-10	2%	8~12
F-15	2%	13~18
F-50	2%	40~60
F-40Y	2%	3,500~5,600
F-15Z	2%	13,000~16,500

DURACOAT® K-series

DURACOAT® K-series

Hypromellose

Type	Solution (2%)	Viscosity Range (Cps)
K-100	2%	80~120
K-40Y	2%	3,000~5,600
K-15Z	2%	11,250~21,000
K-100Z	2%	75,000~140,000
K-200Z	2%	180,000~220,000
K-100 <small>Delux</small>	2%	80~120
K-40Y <small>Delux</small>	2%	3,000~5,600
K-15Z <small>Delux</small>	2%	11,250~21,000
K-100Z <small>Delux</small>	2%	75,000~140,000
K-200Z <small>Delux</small>	2%	180,000~220,000

ONEPACK KIT®

ONEPACK KITL® is a kit product that combines various additives (Cellulose ether base) which is necessary for floor self-leveling production.

It is a bag with all the ingredients added for floor self-leveling production, and users can easily produce products by mixing only essential materials in the field.



Floor Self-Leveling KIT, CTA KIT, Customizable

Please check formulation guide sheet before use

ONEPACK KIT®

Type	Solution (2~5%)	Viscosity Range (Cps)	Dosage for 1,000kg batch	Water Dosage Kg	Application	Moisture content (ASTM D1347-72)
CT-6110	2%	-	4.0kg	230-235kg	Cement tile adhesive/C0 type	Max 8%
CT-6120	2%	-	17.0kg	260-265kg	Cement tile adhesive/C1T type	
CT-6125	2%	-	21.0kg	285-290kg	Cement tile adhesive/C1TE type	
CT-6130	2%	-	28.0kg	260-265kg	Cement tile adhesive/C2T type	
CT-6135	2%	-	30.0kg	305-310kg	(Marble)Cement tile adhesive/C2T type	
CT-6140	2%	-	35.0kg	315-320kg	Cement tile adhesive/C2TE type	
CT-6145	2%	-	28.0kg	305-310kg	(Marble)Cement tile adhesive/C2TE type	
SL-6155	5%	5~20	420.0kg	245kg	Floor self-leveling kit without Li2CO3	
SL-6156	5%	5~20	420.0kg	245kg	Floor self-leveling kit (easy to use) without Li2CO3	
SL-7150	5%	5~20	15.1kg	210-220kg	Floorself-leveling (Premium)KIT	
SL-7250	5%	5~20	15.1kg	210-220kg	Floorself-leveling (General)KIT	
SL-7350	5%	5~20	21.1kg	220-230kg	Floorself-leveling (Economic)KIT	

All Floor leveling PACK Fluidity, mm (JC/T 985-2005) 140 - 150vmm

CELLULOSE ACADEMY

DFC is dedicated to imparting specialized training to our valued customers and business partners. Our tailored classes are designed to equip participants with precise knowledge, ensuring optimal utilization of cellulose ether.

As a forefront producer of cellulose ether, our Product Research Laboratory offers ongoing educational sessions that can be customized to meet the specific needs of our customers.

Analytical Test Class

Cellulose Ether Performance Class

Formulation Development Class

Application class



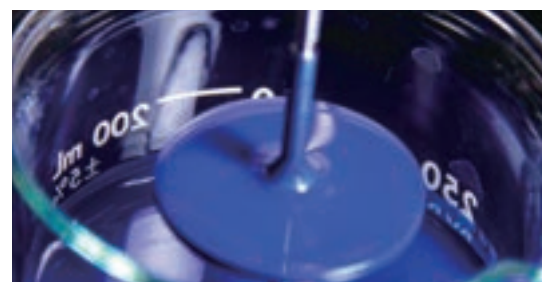
Tech+ Training Class

Training focuses on refining cellulose ether applications and familiarizing participants with production and quality control testing methods.



Formulation class

Utilizing a comprehensive knowledge of cellulose, we offer training on the precise blending of diverse raw materials to manufacture specific cellulose products.



Application class

Training sessions cover the proper technique of incorporating cellulose ether into specified products.



Imported & Distributed by

UMC

UNITED MINERAL & CHEMICAL CORP

160 Chubb Ave, Suite 206, Lyndhurst, NJ 07071
Tel (201) 507-3300 :: Fax (201) 507-1506
Email: inquiry@umccorp.com

Dk FineChemTM

www.dkfinechem.com
www.dkfinechem.co.kr